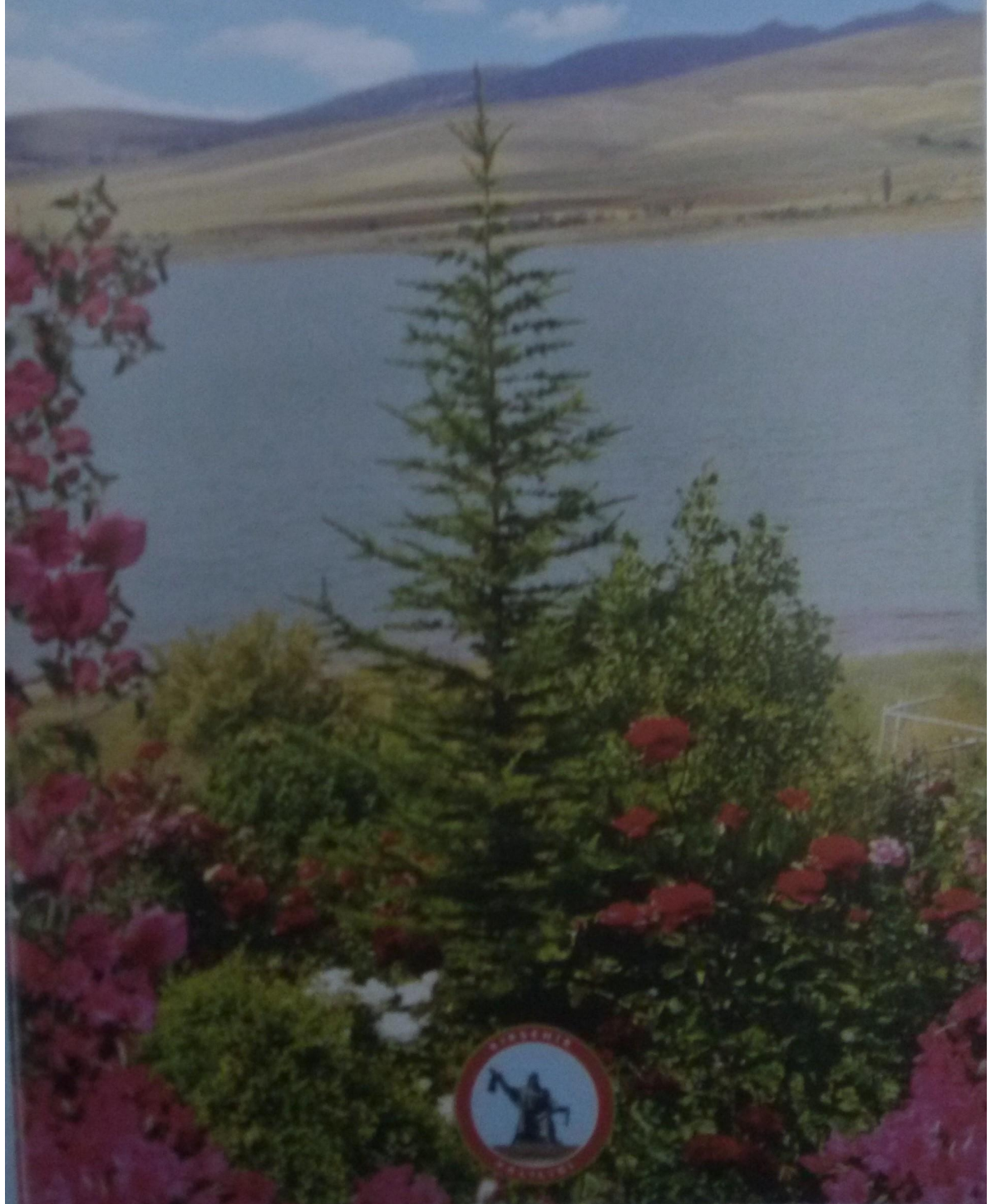


# KIRŞEHİR ÇUĞUN DAM LAKE AND OBRUK LAKE

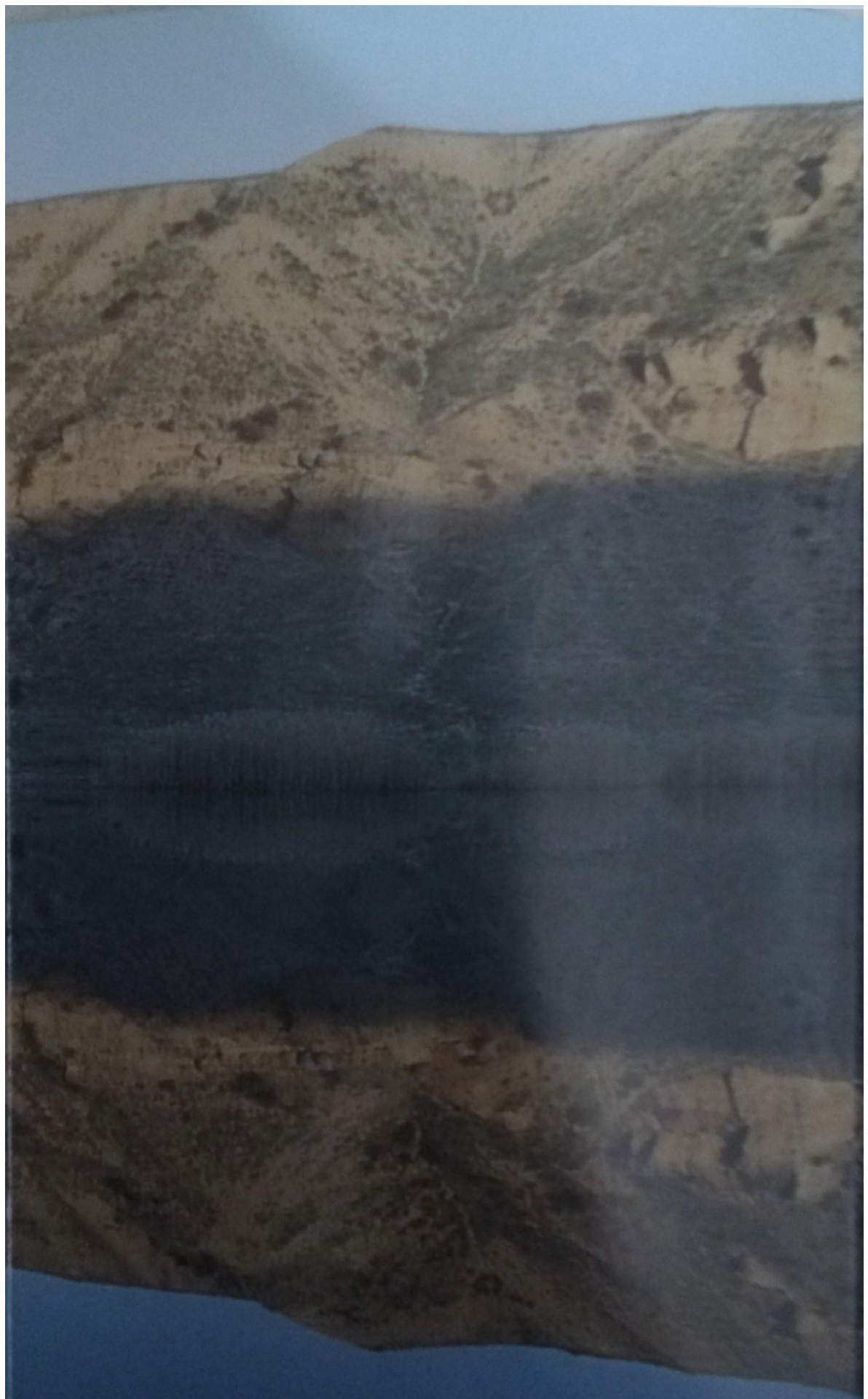






## **OBRUK LAKE**

Obruk Lake is in the 30 kilometres south of District and in the 1 kilometre north of the Obruk Village.



Kırşehir and 10 kilometres south of Mucur  
Kırşehir-Kayseri highway and almost near the



It has been thought by the experts that Obruk Lake, which was announced as a natural site with the decision dated as 20/09/1991 and numbered





as 1106 of Kayseri Conservation of Culture and Nature Existence Committee, was formed with the melting of soft soil. It has been seen that the







environment of the lake is encircled with the natural rocks that reminds simply a wall.

The depth up to the lake level is about 100 metres and its diameter is approximately 900 metres. The





depth of the lake water is about 4 or 5 metres and is has been known that of somewhere; it has very deep parts. Fish species such as carp, mirror carp and green tench live in the lake.



There have been a few little rooms formed on the rocks surrounding the lake like a wall. Almost half surface of the lake is covered with the reed beds and other water plants.



Among people it has been thought that Obruk  
been believed that lake hollow has been shaped





Lake is connected with Seyfe Lake and it has  
as a result of falling of a meteor stone.





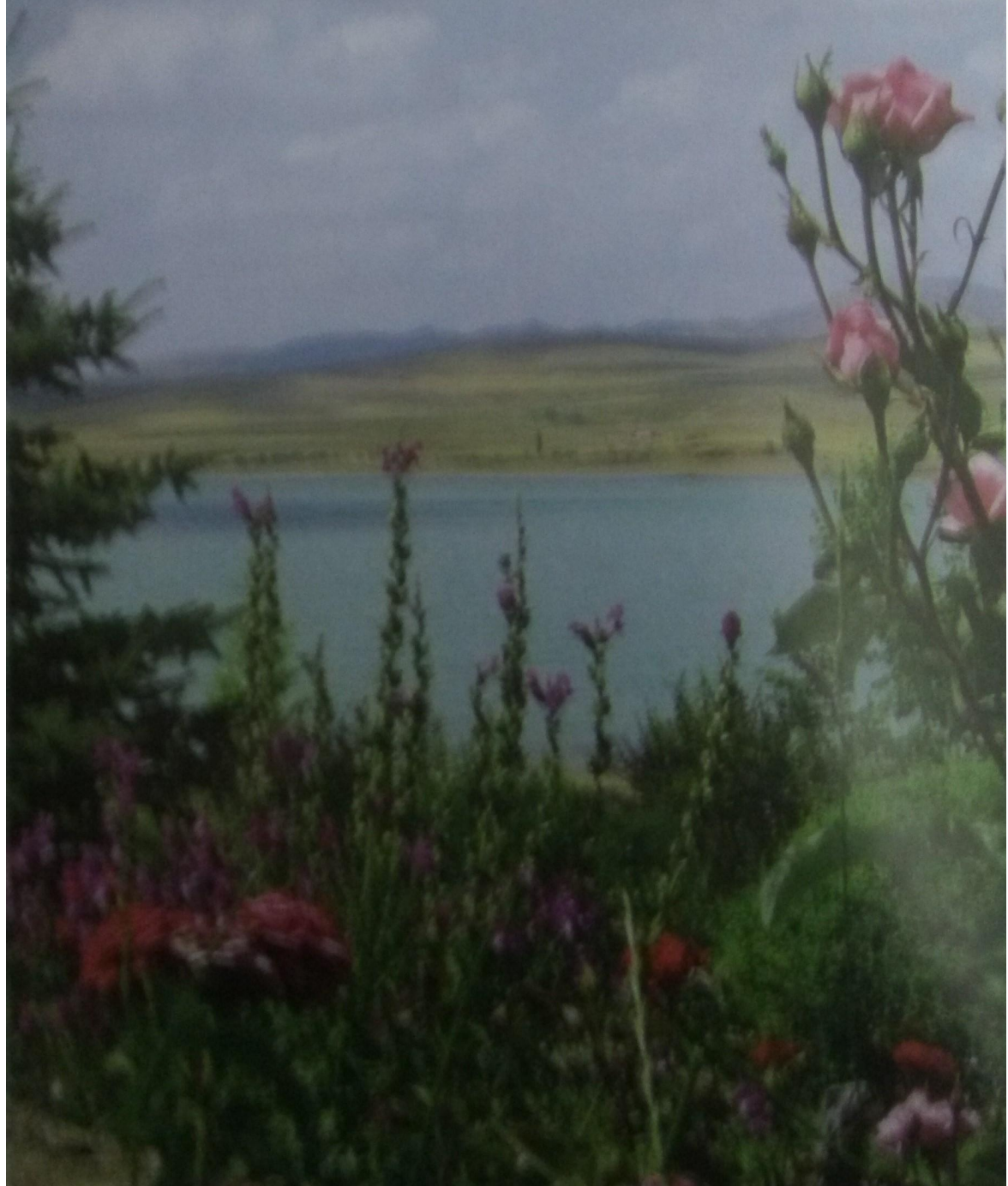
## ÇUĞUN DAM LAKE

Çuğun Dam Lake, which is opened to enterprise irrigation, it is 20 km away from Karselir and near Çuğun Dam is a type of soil rock filling.





in 1970 to prevent flood and for  
d in North West of Çuğun Village,







Çuğun Dam Lake, which is convenient for especially wind surfing among the water sports, is one of the most preferable area as a picnic and popular excursion sport place. Some fish species such as carp, mirror carp and chub live in the lake which is suitable for fishing. The





lake which freezes completely in winter also presents a striking view for visitors.

At the same time, for the ones who would like to have fish feast towards lake view the restaurant near the lake is one of the resort places of visitors. The visitors







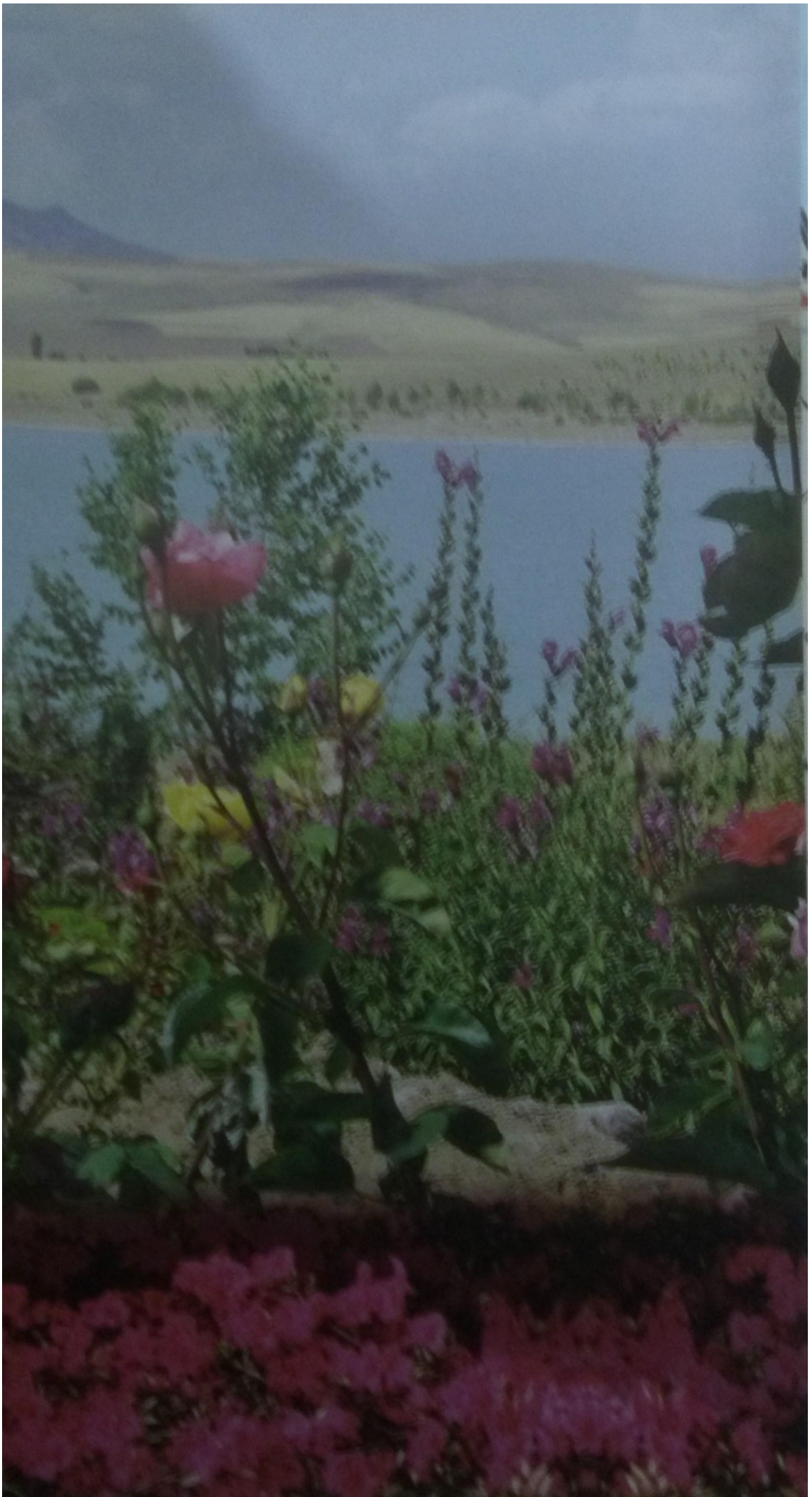
who see the botany garden that surrounds all the corners of the lake, show an intensive interest that garden sheltering every tones of green.



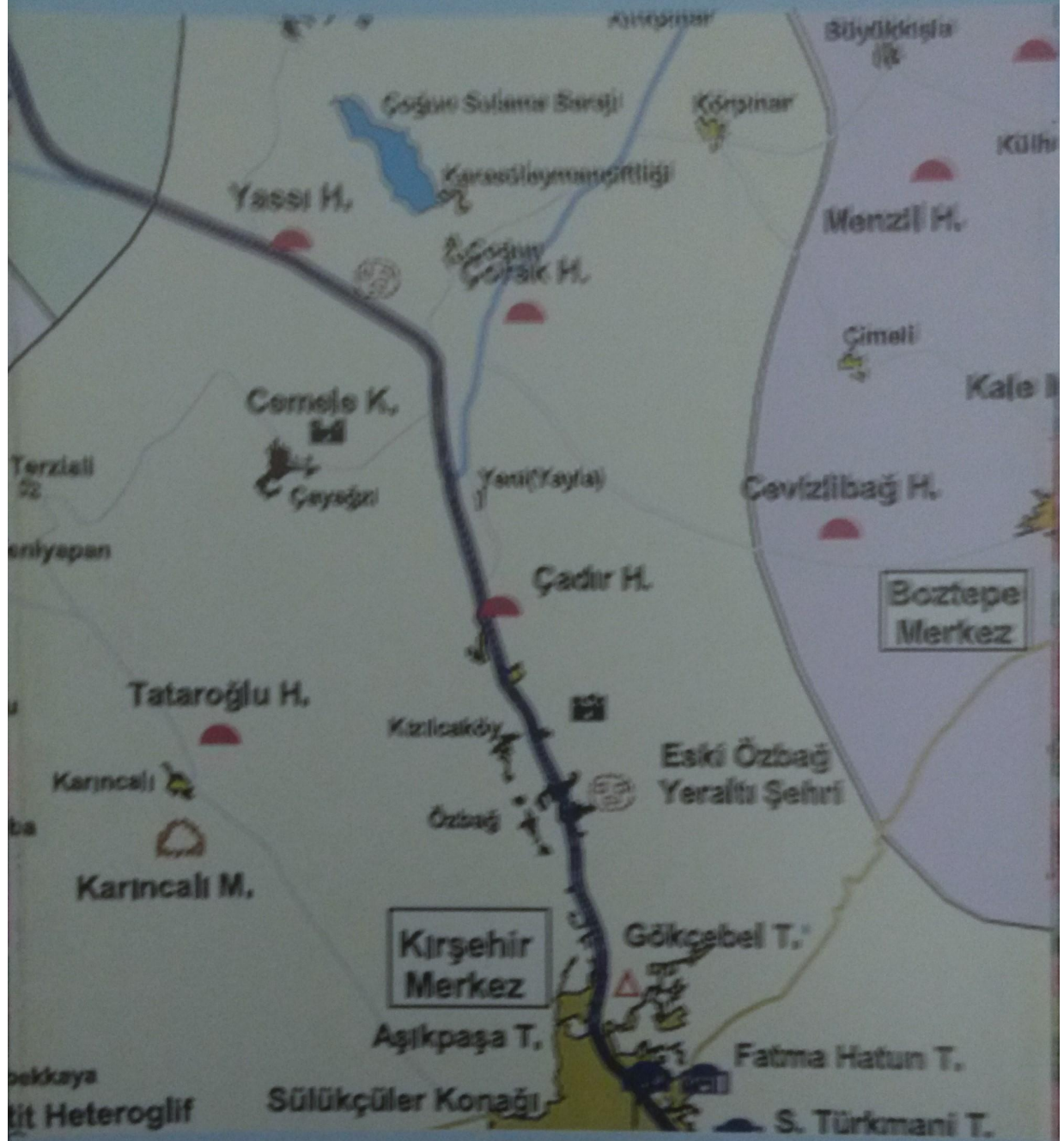












Prepared by: Yıldız ERASLAN (Tourism Expert)  
Translated by: Serap SÜLÜ (English Language Teacher)  
Haluk KARAOĞLAN (English Language Teacher)  
(\* The marked photos were taken from Mustafa BİAĞ'ın archives.  
It is printed by Special Provincial Administration  
[www.kirsehir.gov.tr](http://www.kirsehir.gov.tr)

